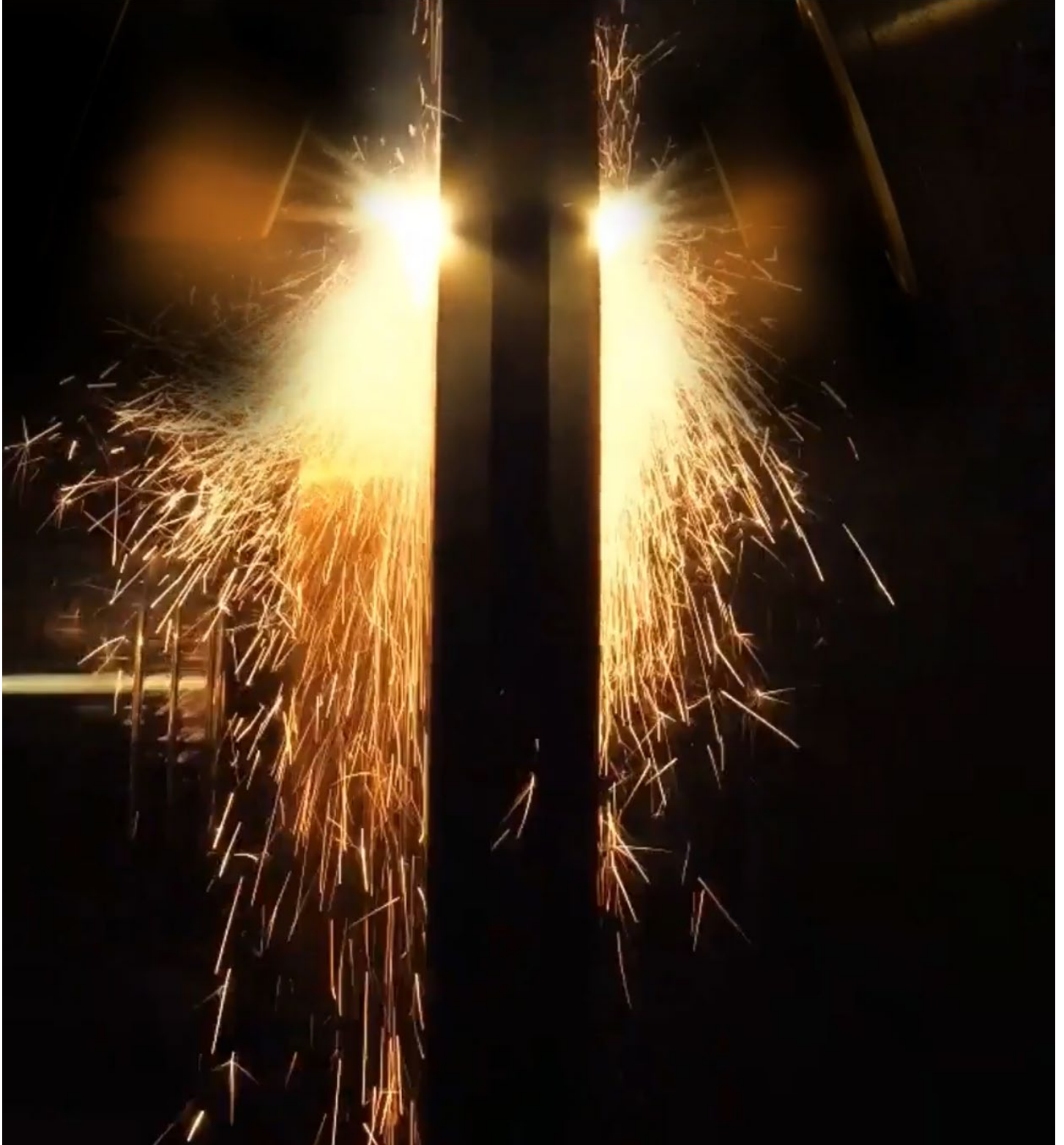


## **Complete Development Capabilities for Best-in-Class Brake Disc Coating Solutions**



MetcoBrake coating process

# Your Partner for High-Performance Brake Disc Coatings!

Metco Joining & Cladding, in collaboration with our trusted partners, offers a complete value chain solution for brake disc coatings. From material development to industrialization, we provide expertise tailored to meet the stringent requirements of **EURO 7** regulations—covering **all propulsion types and vehicle segments**, from **ICE to BEV**, and from **passenger cars to heavy-duty and rail vehicles**.

## Our Complete Capabilities:

- **Rapid Development of Dedicated Materials** – Engineered to meet specific performance and regulatory requirements.
- **Process Development** – Optimized solutions for high-performance and cost-effective manufacturing.
- **Industrialization** – Scalable and efficient solutions for serial production.

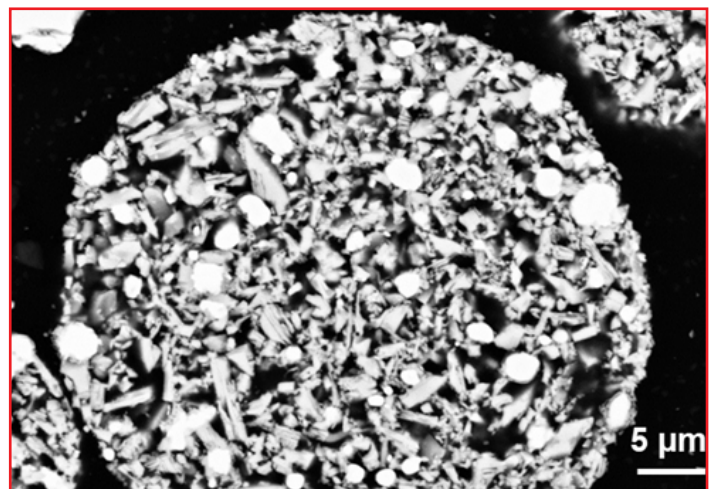
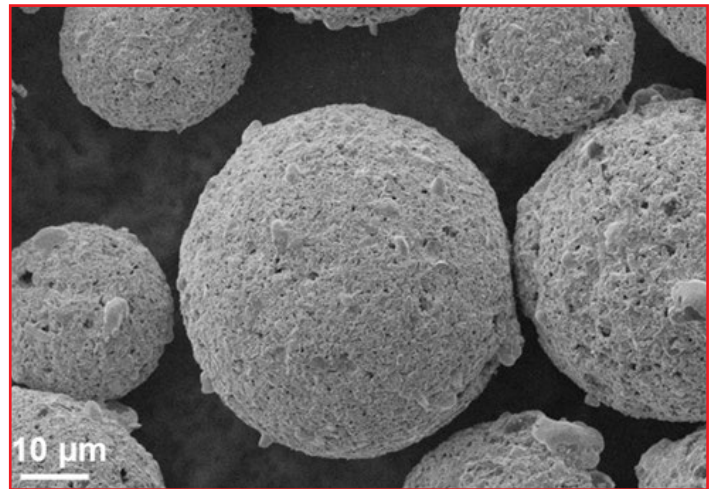
## Our Products & Services:

Metco Joining & Cladding offers a **wide range of solutions** for brake disc coatings:

- **MetcoBrake™ Powders** – Advanced coating materials designed for superior performance.
- **Metco Powder Feeders** – Precision-engineered delivery systems for optimized coating application.
- **Laser Cladding Process Development** – State-of-the-art technology ensuring durability and efficiency.
- **Metco Coating Services** – End-to-end solutions for customized brake disc coatings.

## Why Choose Metco Joining & Cladding?

- **Pioneering Innovation** – Industry-leading research and development for cutting-edge solutions.
- **Regulatory Compliance** – Future-proof coatings aligned with **EURO 7** and beyond.
- **Proven Performance** – Extensive testing and validation for reliability and safety.



MetcoBrake Powder Family

Partner with **Metco Joining & Cladding** to drive progress in brake disc coating technology and ensure your solutions meet the highest industry standards.