

MetcoBrake Solutions for Brake Disc Coatings

MetcoBrake solutions have already been successfully validated by OEMs and proven to reduce fine dust emissions while maintaining brake performance.

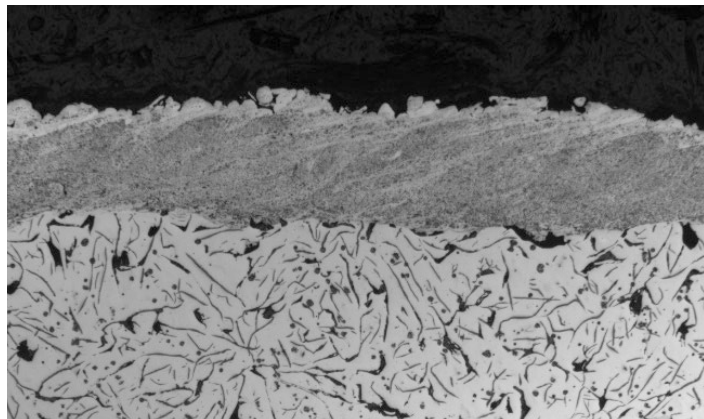
MetcoBrake Single Layer

MetcoBrake 9501A:

- Cost-effective solution
- Thin coating layer, as low as 100 µm
- Rear axle applications
- Compatible with NAO & Hybrid pads
- Crack resistant solution

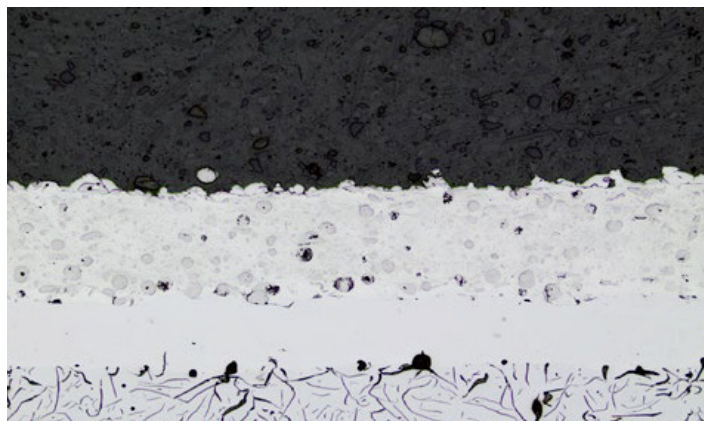
MetcoBrake 9502A (Gen 2):

- Front axle applications
- Compatible with low-steel pads
- Reduced fine dust emissions



MetcoBrake Double Layer

- Bond Coat & Matrix materials:
MB 430L, MB 316L, MB 9520-MX
- Hard phase:
MB 9730-TiC, MB WC, MB 9750-TiCN
- Suitable for high-demand applications:
Large cars, Vans, and Trucks
- Improved processability
- Compatible with low-steel pads
- Reduces fine dust emissions by up to 85%



MetcoBrake AMC AL-TiC

- AMC single-layer solution for Al brake discs
- Designed for train and future EV applications
- Reduced weight
- Improved wear resistance
- Improved crack resistance
- Reduce fine dust emission

